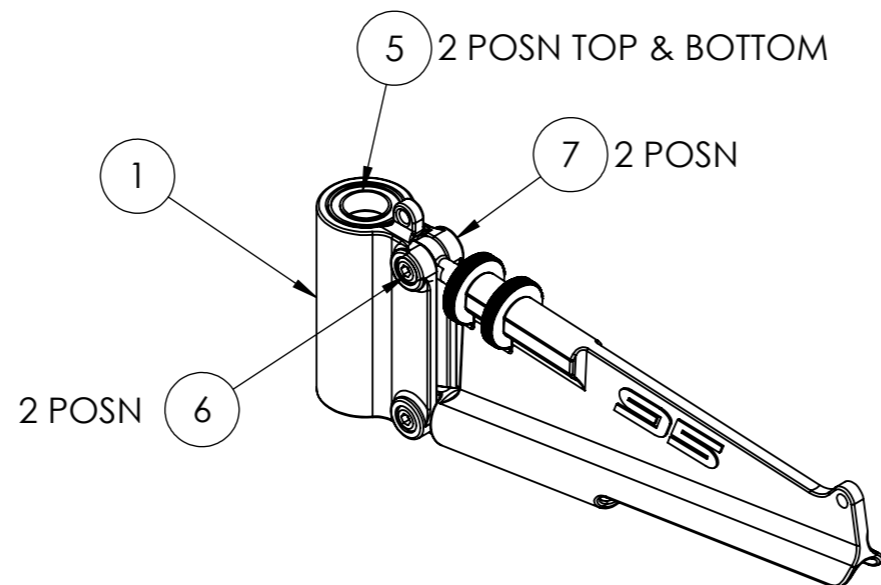
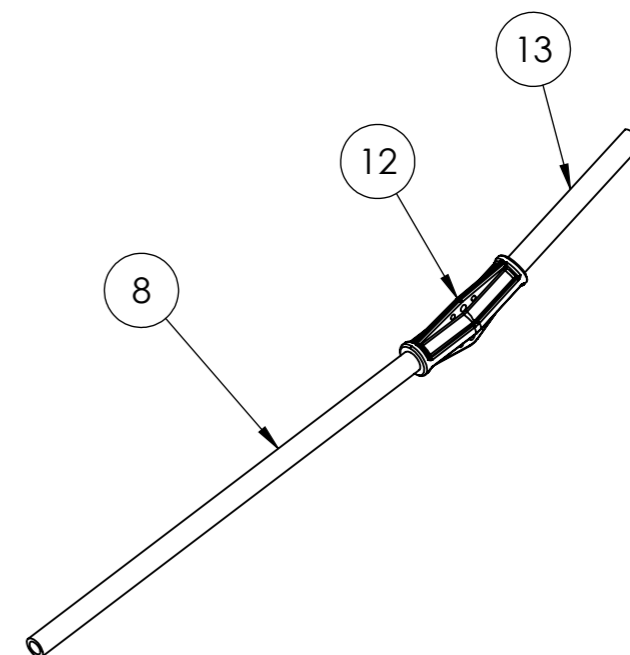


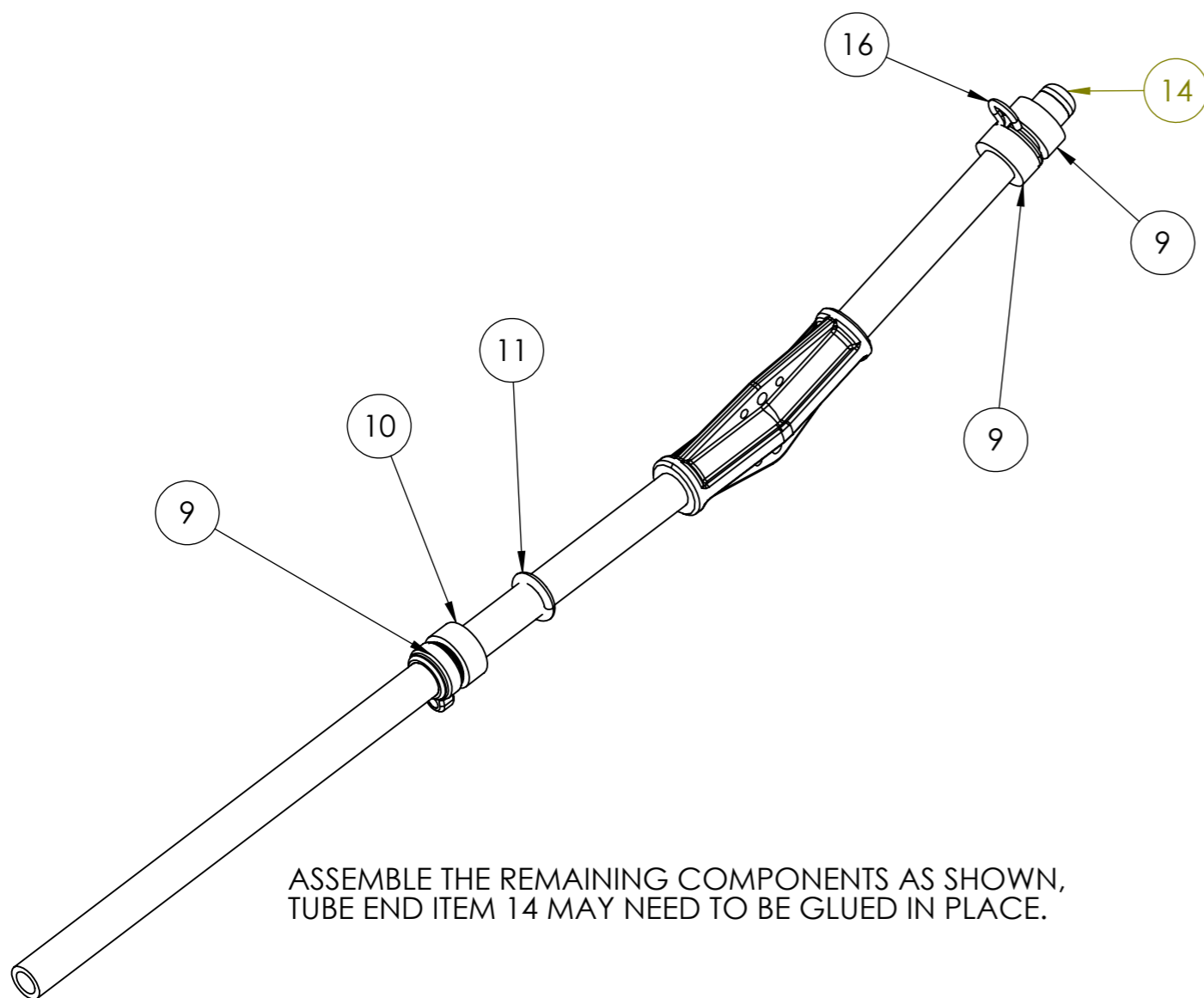
SCREW ITEM 3 EYE BOLT INTO ITEM 4 KNURLED NUT. WITH THE REMAINING KNURLED NUT, ITEM 4, POSITIONED AS SHOWN, INSERT THE ASSEMBLED ITEMS AND ROTATE THE SECOND KNURLED NUT UNTIL THE EYE BOLT ASSEMBLY IS RETAINED.



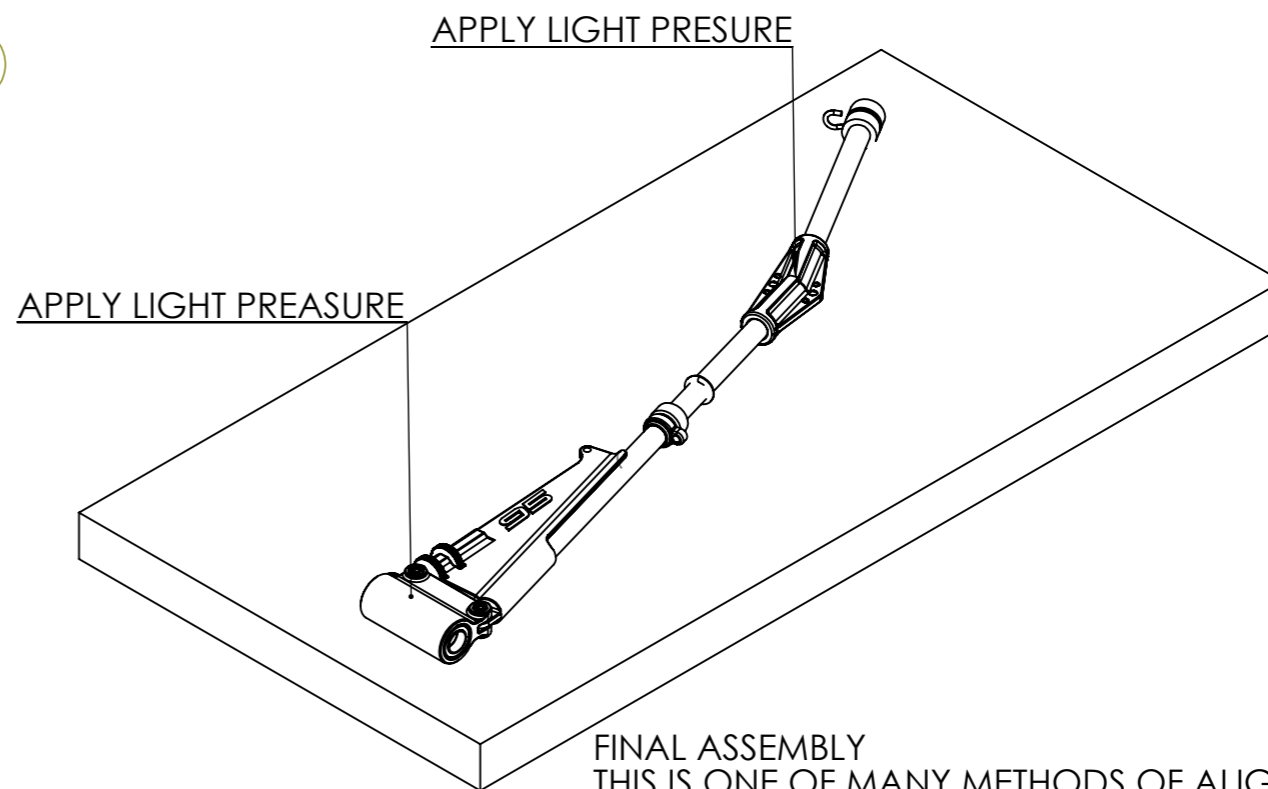
INSERT BEARING ITEM 5 IN EITHER END OF THE BEARING HOUSING ITEM 1, THEN FIT THE ASSEMBLED COMPRESSION STRUT ITEM 1, USING THE HEX SKT SCREWS AND NUTS, ITEMS 6 & 7. A 1.5mm ALLEN KEY WILL BE REQUIRED.



APPLY A SMALL AMOUNT OF A GLUE OF YOUR CHOICE (SUPER GLUE (CA) IS ACCEPTABLE) TO ONE END OF EACH TUBE ITEMS 8 & 13. SLIDE THE TUBE INTO THE TUBE JOINER, ITEM 12, AND HOLD TILL SET.



ASSEMBLE THE REMAINING COMPONENTS AS SHOWN, TUBE END ITEM 14 MAY NEED TO BE GLUED IN PLACE.



FINAL ASSEMBLY
THIS IS ONE OF MANY METHODS OF ALIGNMENT DURING FINAL ASSEMBLY. APPLY A SMALL AMOUNT OF THE GLUE OF YOUR CHOICE (IE.CA MEDIUM CURE) TO THE END OF THE FREE TUBE AND ALONG THE OPEN TUBE OF THE COMPRESSION STRUT, ITEM 2. SLIDE THE ASSEMBLED GOOSENECK AND TUBE ASSEMBLY, TOGETHER ENSURING MINIMAL ROTATION. LAY IMMEDIATELY ON A FLAT SURFACE APPLYING A LIGHT VERTICAL PRESSURE TO THE GOOSENECK AND TUBE JOINER UNTIL BOND IS MADE. THIS WILL ALIGN THE TUBES